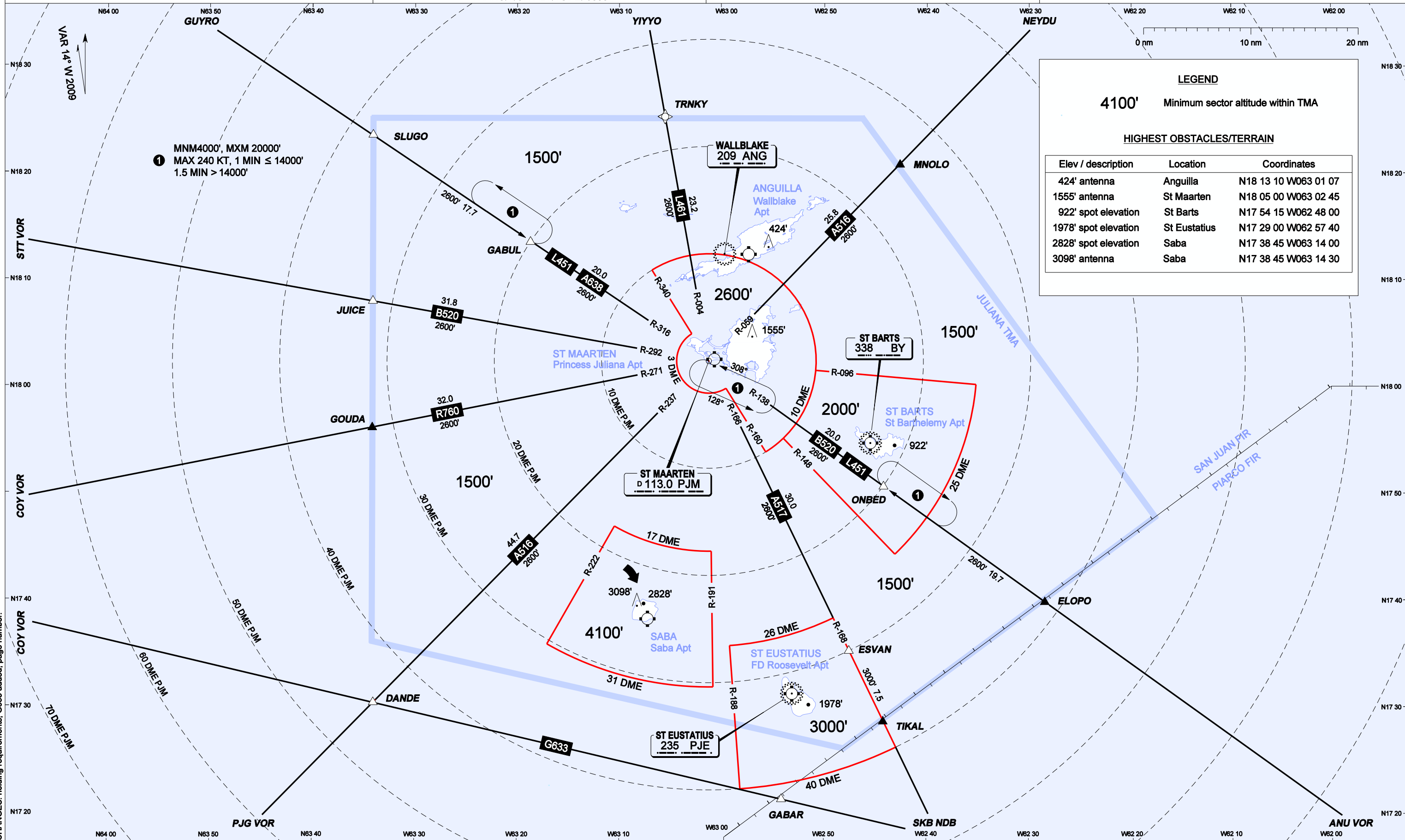


RADAR MINIMUM ALTITUDE CHART - ICAO

AERODROME ELEVATION: 14'
TRANSITION LEVEL: FL65
TRANSITION ALTITUDE: 5000'

JULIANA APPROACH 128.95 (PRIMARY), 118.7
JULIANA TOWER 118.7

PHILIPSBURG, ST MAARTEN (TNCM)
PRINCESS JULIANA INT'L APT



LEGEND

4100' Minimum sector altitude within TMA

HIGHEST OBSTACLES/TERRAIN

Elev / description	Location	Coordinates
424' antenna	Anguilla	N18 13 10 W063 01 07
1555' antenna	St Maarten	N18 05 00 W063 02 45
922' spot elevation	St Barts	N17 54 15 W062 48 00
1978' spot elevation	St Eustatius	N17 29 00 W062 57 40
2828' spot elevation	Saba	N17 38 45 W063 14 00
3098' antenna	Saba	N17 38 45 W063 14 30

CHANGES: holding requirements, G633 added, page number.