

**STANDARD DEPARTURE  
CHART INSTRUMENT  
(SID) - ICAO**

**AMILCAR CABRAL  
AIRPORT GVAC  
RWY 01**

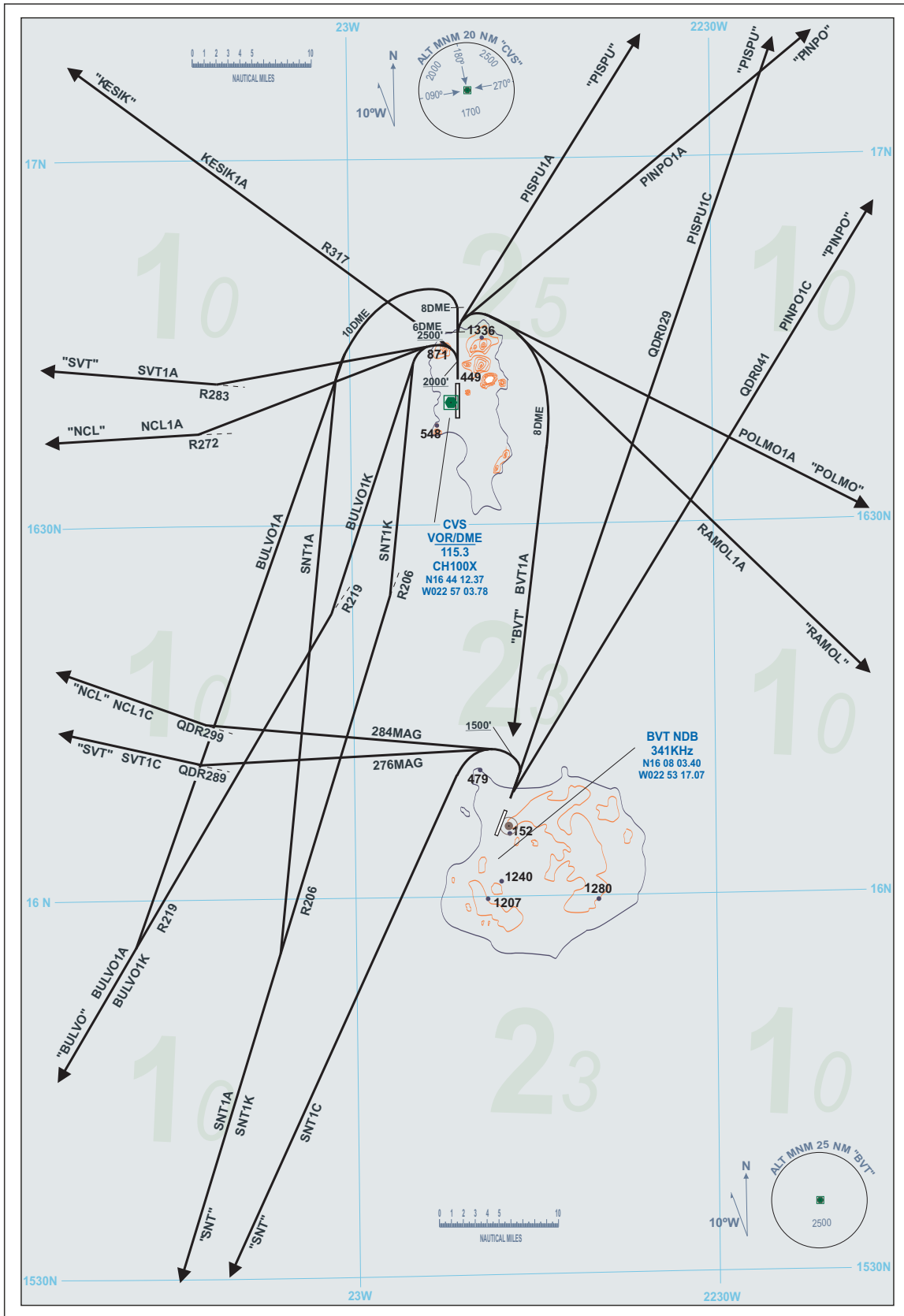
TA: 7000'  
VAR: 10W

APP - 126.400  
TWR - 119.700

TA: 7000'  
VAR: 10W

APP - 126.400  
TWR - 118.900

**RABIL AIRPORT  
GVBA  
RWY 03**



STANDARD DEPARTURE  
(SID) – ICAO  
DESCRIPTION

AMILCAR CABRAL  
AIRPORT GVAC  
RWYS 01/19

RABIL AIRPORT  
GVBA  
RWYS 03/21

GVAC RWY 01

BULVO1A : Climb on runway track till 8 DME/CVS. Turn left to BULVO (RDL219CVS). Remain beyond 10 DME CVS.  
BULVO1K : Climb on runway track till passing 2000ft. Turn left to BULVO (RDL219CVS).  
BVT1A : Climb on runway track till passing 2500ft and 6 DME/CVS. Turn right direct BVT NDB. Remain beyond 8 DME/CVS.  
KESIK1A : Climb on runway track till passing 2000ft. Turn left to KESIK (RDL317CVS) .  
NCL1A : Climb on runway track till passing 2000ft. Turn left to intercept and follow RDL272CVS to NCL NDB. MSA 6500ft.  
PISPU1A : Climb on runway track till passing 2500ft and 6 DME/CVS. Turn right to PISPU (RDL040CVS).  
PINPO1A : Climb on runway track till passing 2500ft and 6 DME/CVS. Turn right to PINPO (RDL057CVS).  
POLMO1A : Climb on runway track till passing 2500ft and 6 DME/CVS. Turn right to POLMO (RDL120CVS).  
RAMOL1A : Climb on runway track till passing 2500ft and 6 DME/CVS. Turn right to RAMOL (RDL137CVS). Remain beyond 8 DME CVS.  
SNT1A : Climb on runway track till 8 DME/CVS. Turn left to intercept and follow RDL206CVS to SNT VOR. Remain beyond 10 DME CVS.  
SNT1K : Climb on runway track till passing 2000ft. Turn left to intercept and follow RDL206CVS to SNTVOR. Remain beyond 3 DME CVS.  
SVT1A : Climb on runway track till passing 2000ft. Turn left to intercept and follow RDL283CVS to SVT NDB. MSA 4600ft.

GVAC RWY 19

BULVO1B : After departure follow R191CVS till 4 DME CVS. Turn right to follow RDL219CVS to BULVO.  
KESIK1B : After departure follow R191CVS till 6 DME CVS. Turn right to KESIK (RDL317CVS).. Remain beyond 8 DME/CVS.  
NCL1B : After departure follow R191CVS till passing 2000ft or 4 DME CVS. Turn right to intercept and follow RDL272CVS to NCL NDB.  
PISPU1B : After departure follow R191CVS till 5 DME CVS. Turn left to intercept and follow arc 7 DME CVS. Crossing R137 follow track029MAG to intercept and follow RDL040CVS to PISPU.  
PINPO1B : After departure follow R191CVS till 5 DME CVS. Turn left to intercept and follow arc 7 DME CVS. Crossing R137 follow track044MAG to intercept and follow RDL057CVS to PINPO.  
POLMO1B : After departure follow R191CVS till 5 DME CVS. Turn left to intercept and follow arc 7 DME CVS. Crossing R169 follow track099MAG to intercept and follow RDL120CVS to POLMO  
RAMOL1B : After departure follow R191CVS till 5 DME CVS. Turn left to intercept and follow arc 7 DME CVS. Crossing R169 follow track099MAG to intercept and follow RDL137CVS to RAMOL.  
SNT1B : After departure follow R191CVS till 4DME CVS. Turn right to follow RDL206CVS to SNT VOR.  
SVT1B : After departure follow R191CVS till passing 2000ft or 4 DME CVS. Turn right to intercept and follow RDL283CVS to SVT NDB.

GVBA RWY 03

NCL1C : Climb on runway heading till passing 1500ft. Turn left to follow track 284MAG to join QDR299BVT to NCL NDB. MSA over NCL6500ft.  
PISPU1C : After departure join QDR029BVT to PISPU (RDL040CVS/80DME).  
PINPO1C : After departure join QDR041BVT to PINPO (RDL057CVS/80DME).  
SNT1C : Climb on runway heading till passing 1500ft. Turn left direct SNT VOR (RDL036SNT).  
SVT1C : Climb on runway heading till passing 1500ft. Turn left to follow track 276MAG to join QDR289BVT to SISAU (N162116W0242011/QDR200NCL) then direct SVT NDB on QDR135SVT. MSA 4600ft.

GVBA RWY 21

NCL1D : After departure turn right to join QDR299BVT to NCL NDB. MSA over NCL is 6500ft.  
PISPU1D : Climb on runway heading till passing 1500ft. Turn right to follow track 044MAG to join QDR029BVT to PISPU(RDL040CVS/80DME).  
PINPO1D : Climb on runway heading till passing 1500ft. Turn right to follow track 049MAG to join QDR041BVT to PINPO (RDL057CVS/80DME).  
SNT1D : After departure follow QDR216BVT to SNT VOR (RDL037SNT).  
SVT1D : After departure turn right to join QDR289BVT to SISAU (N162116 W0242011 / QDR200NCL) then direct SVT NDB on QDR135SVT. MSA 4600ft.