

**STANDARD DEPARTURE
CHART INSTRUMENT
(SID) - ICAO**

**AMILCAR CABRAL
AIRPORT GVAC
RWY 19**

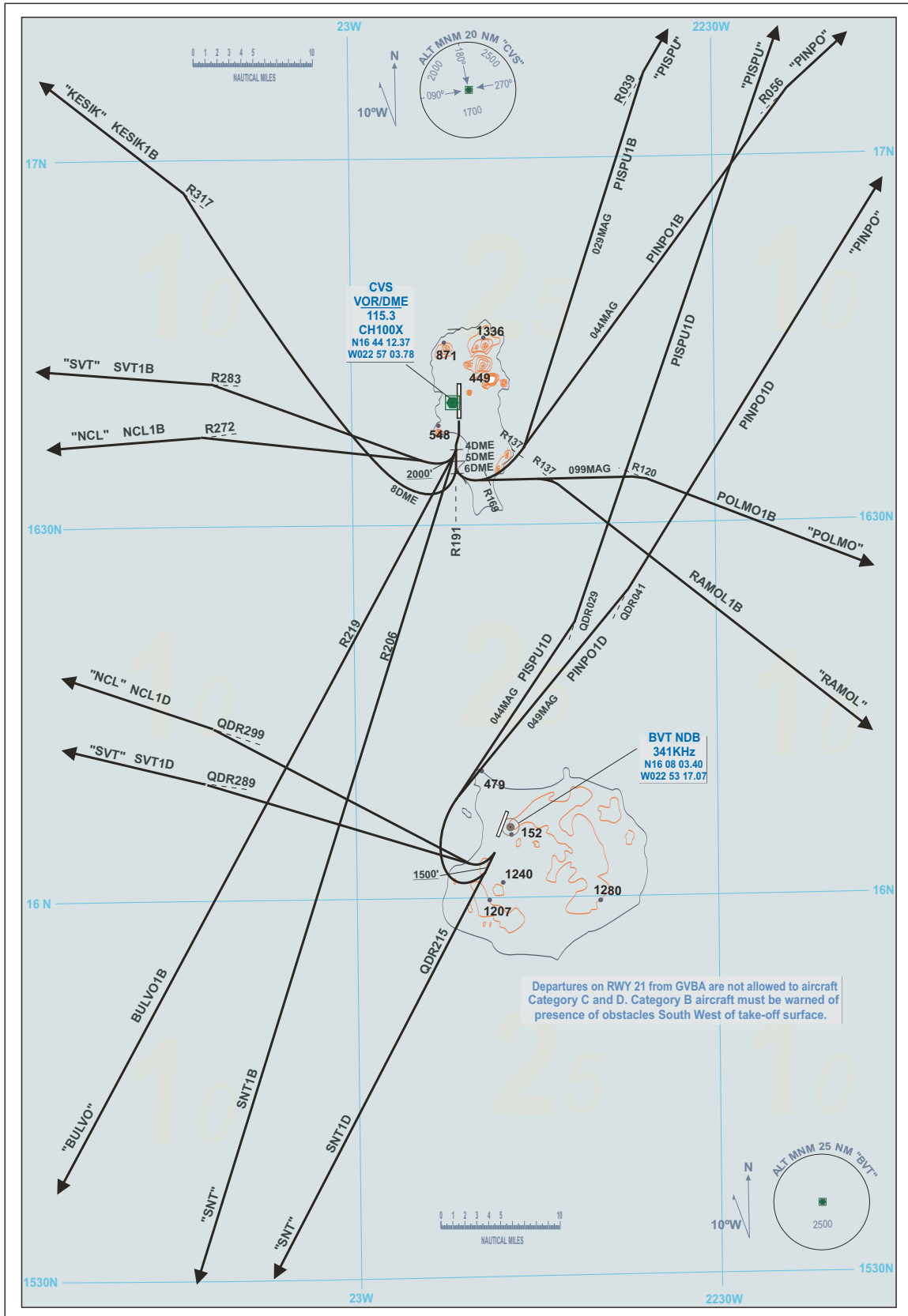
TA: 7000'
VAR: 10W

TA: 7000'
VAR: 10W

**RABIL AIRPORT
GVBA
RWY 21**

APP - 126.400
TWR - 119.700

APP - 126.400
TWR - 118.900



INTENTIONALLY LEFT BLANK