

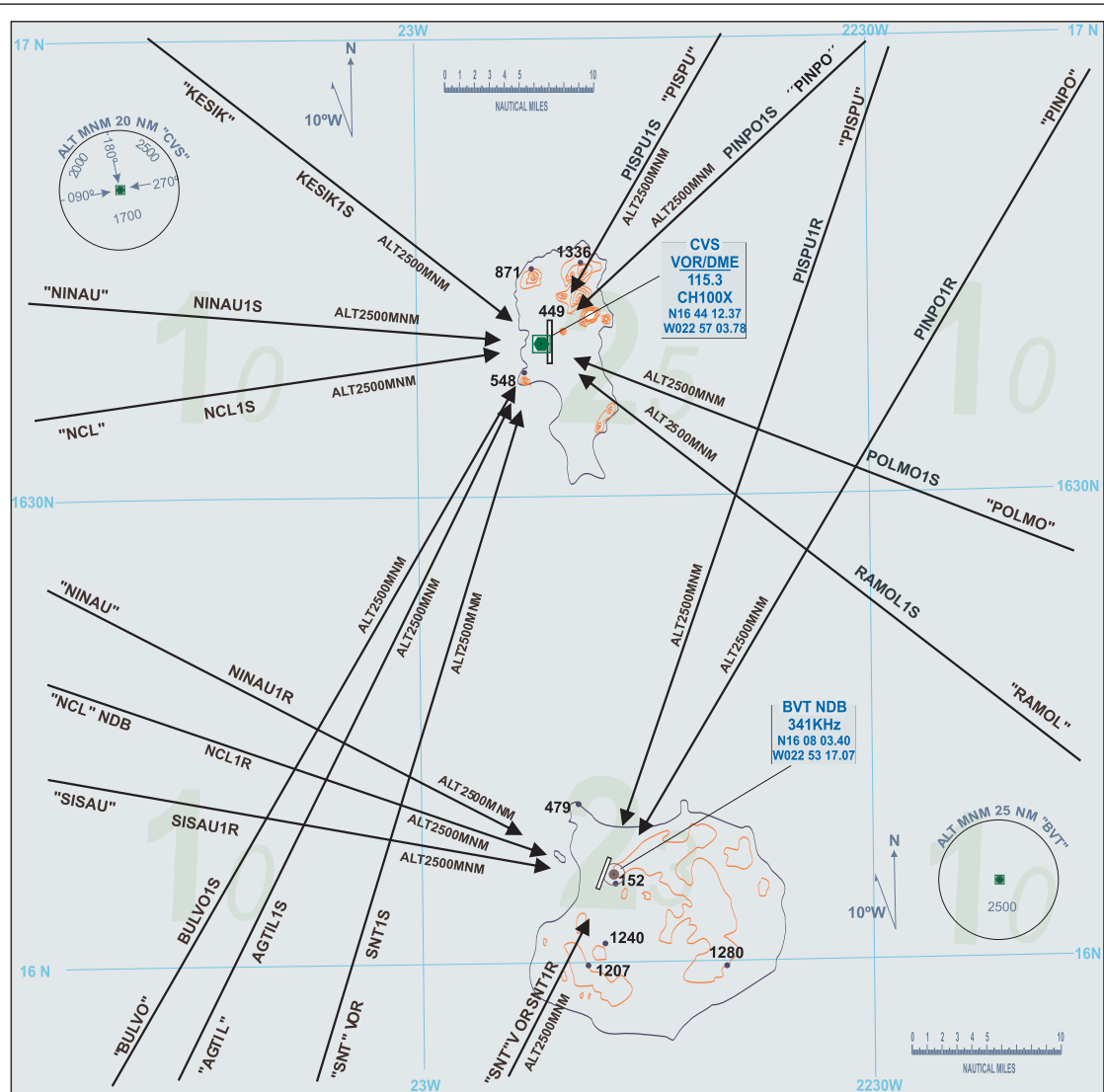
**STANDARD ARRIVAL
CHART INSTRUMENT
(STAR) - ICAO**

**AMILCAR CABRAL
AIRPORT GVAC
RWYs 01 & 19**

TA: 7000'
VAR: 10W
APP - 126.400
TWR - 119.700

TA: 7000'
VAR: 10W
APP - 126.400
TWR - 118.900

**RABIL AIRPORT
GVBA
RWYs 03 & 21**



Note: Minimum safe altitudes (MSA) are indicated for each leg. Except in case of emergency or loss of communications altitudes to maintain are those assigned by ATC. These must respect the indicated MSAs.

To GVAC:

All arrivals proceed direct to CVS VOR MSA 2500ft for an ILS approach or request a visual approach.

To GVBA:

All arrivals proceed direct to BVT NDB MSA 2500ft for an ADF approach or request a visual approach.

INTENTIONALLY LEFT BLANK