

**INSTRUMENT
APPROACH
CHART - ICAO**

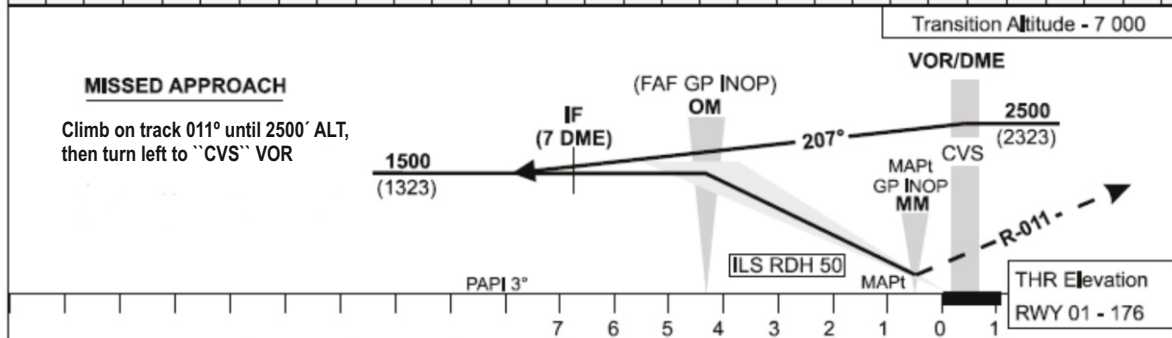
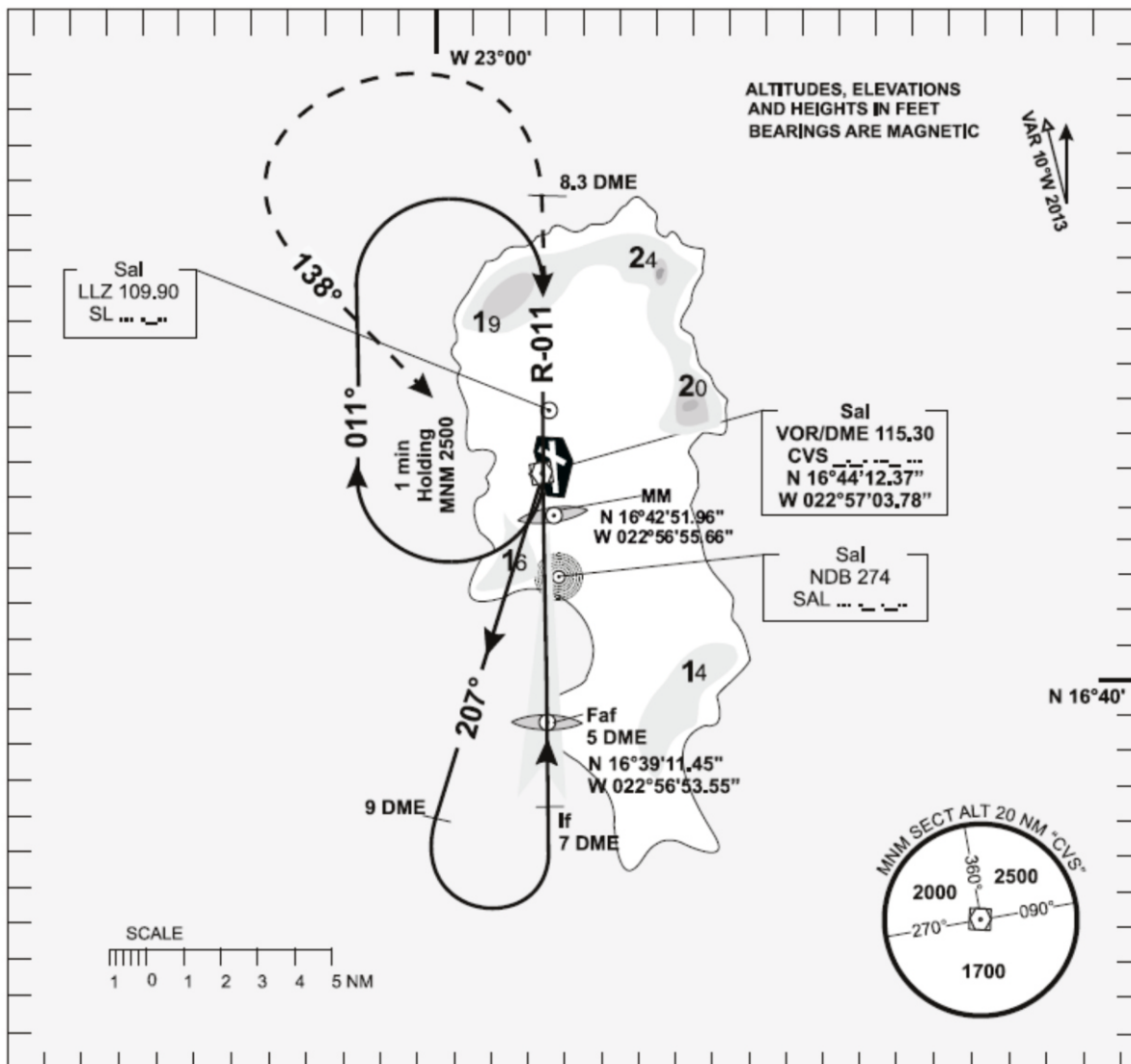
**AERODROME ELEV - 184ft
HEIGHTS RELATED TO
THR RWY-01 ELEV - 184ft**

**TWR - 119.70
APP - 126.40**

SAL/ AMILCAR CABRAL

**VOR/ILS
RWY 01**

ACFT CAT - A to D



REV : Transition ALT.

OCA(H)		A	B	C	D
STRAIGHT - IN APPROACH			379 (202)		
GP INOP			540 (363)		
CIRCLING	EAST RWY 01	750	890	1380	1750
	WEST RWY 01	750	750	1280	1280

GP INOP OM to MM 3,64 NM (5,2%)							
Speed	KT	80	100	120	140	160	180
Time	min:s	2:46	2:13	1:51	1:35	1:23	1:14
RATE	ft/min	420	530	640	740	850	950

INTENTIONALLY LEFT BLANK