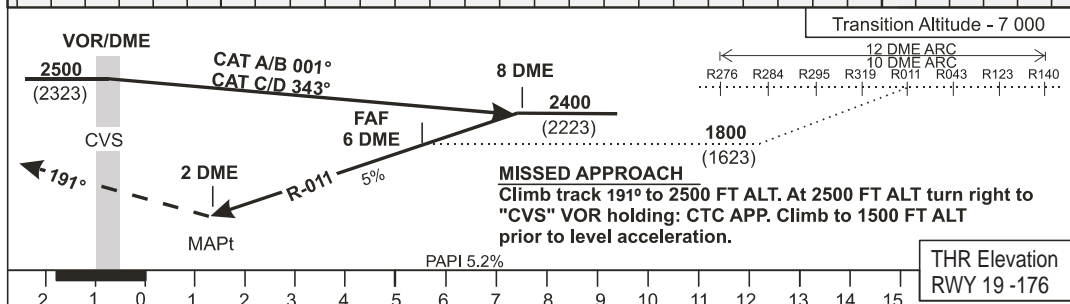
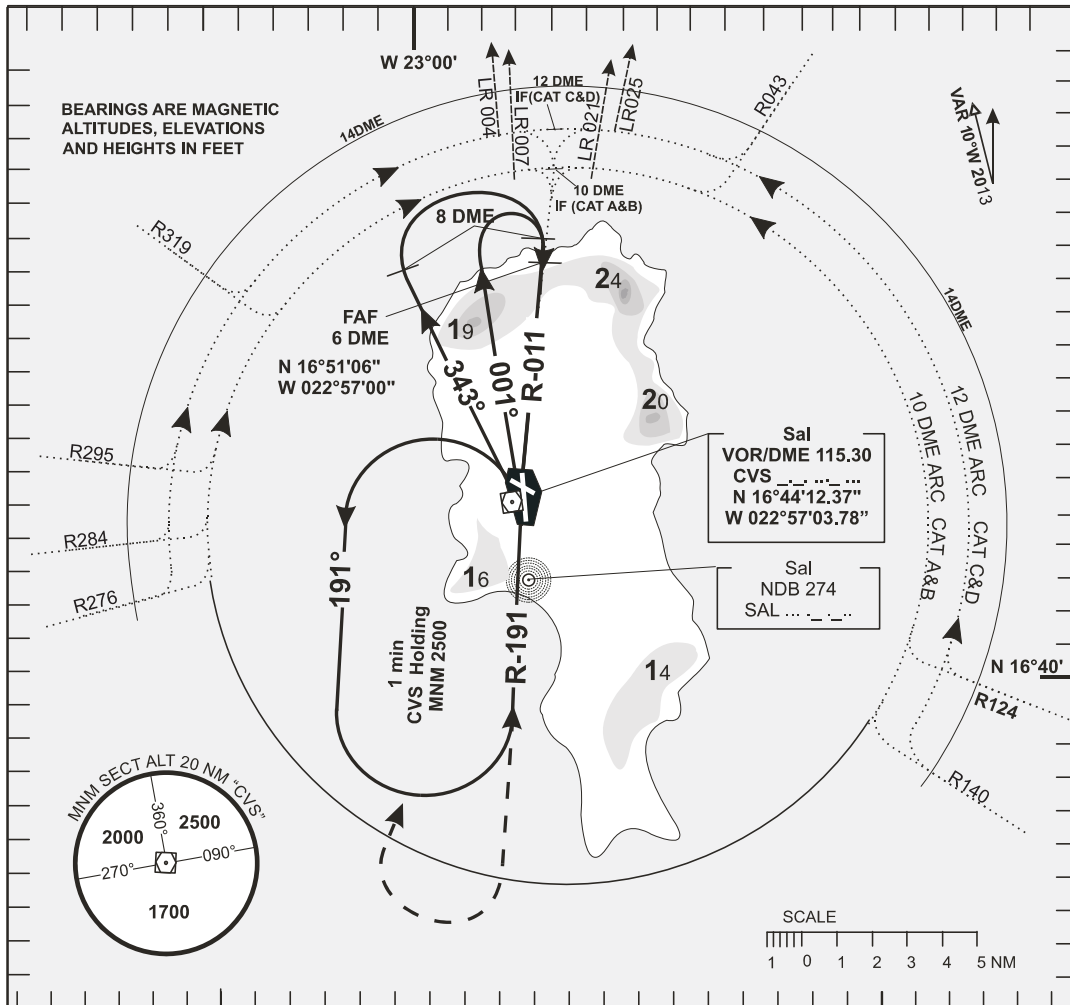


**INSTRUMENT APPROACH CHART - ICAO** **AERODROME ELEV - 184ft** **HEIGHTS RELATED TO TDZ RWY-19 ELEV - 178ft** **TWR - 119.70** **APP - 126.40** **SAL/ AMILCAR CABRAL** **VOR/DME RWY 19** **ACFT CAT - A to D**



REV : Transition ALT.	OCA(H)				A	B	C	D	
	STRAIGHT - IN APPROACH				720 (543)				
	CIRCLING	EAST RWY 01	750	890	1380	1750			
	WESTRWY 01	750	750	1280	1280				
		DME-CVS				6	5	4	3
		ALTITUDE (HEIGHT)				1800 (1640)	1500 (1340)	1200 (940)	900 (740)
		FAF 6 DME to MAPt							
Speed	KT	80	100	120	140	160	180		
Time	min:s	3:00	2:24	2:00	1:43	1:30	1:20		
RATE	ft/min	410	510	620	720	820	920		

INTENTIONALLY LEFT BLANK